

InRouter6x1 Series Quick Guide



© 2014 InHand Networks, All rights reserved.
Republication without permission is prohibited.

Overview

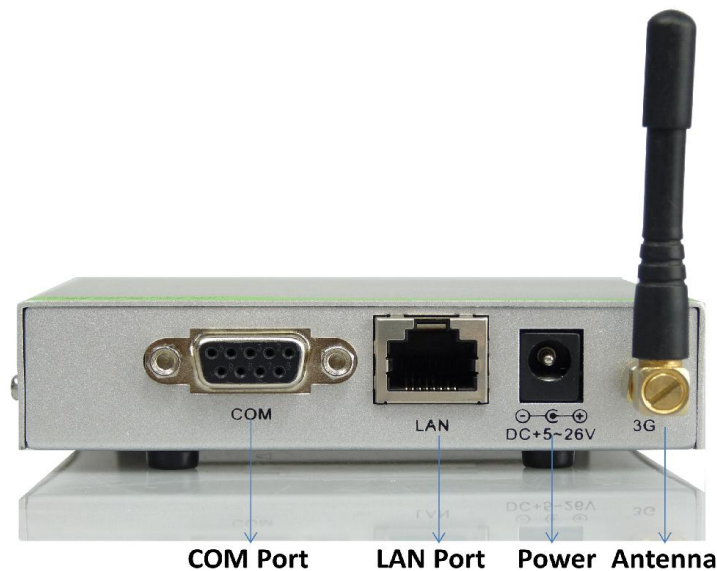
This document is used to guide customer installing and operating InRouter6x1 Series industrial router which researched and developed by InHand Networks. Please make sure the product model and the accessories in the packaging (like power supply, antenna) before using. If you need buy SIM card, please consult the local operators.

Panel Layout

Front view:



Back view:



Quick Connection to Internet



Notice: all the operation should be carried out when InRouter keep interruption of power supply.

Step 1: Preparation



Insert SIM Card



Antenna Installation



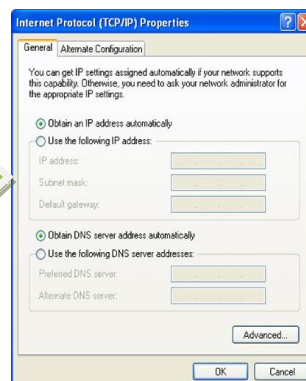
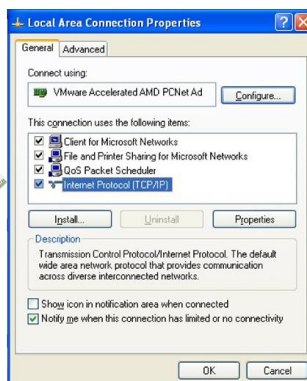
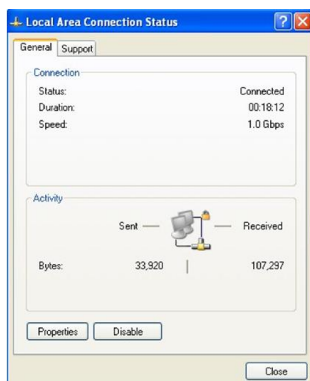
Connection with PC



Power Supply

Step 2 First Connect InRouter6x1 with Your PC

InRouter6x1 can auto-distribute IP address for PC. Please set the PC to automatically obtain IP address via DHCP.
(Based on the Windows Operation System):



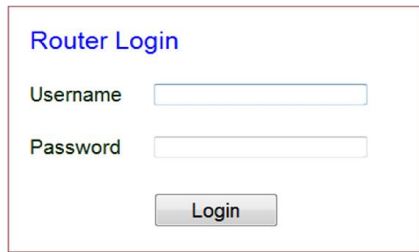
Open "Control Panel"→
"Network Connections",
then enter "Local Area
Connection Status" screen.

Click "Properties",
enter "Local Area
Connection
Properties" screen.

Choose "Internet Protocol
(TCP/IP)", click "Properties"
button to choose "Obtain IP
address automatically."

Step 3: Start to configure your InRouter6x1 (Optional)

After you have finished the former steps, you can configure the InRouter:

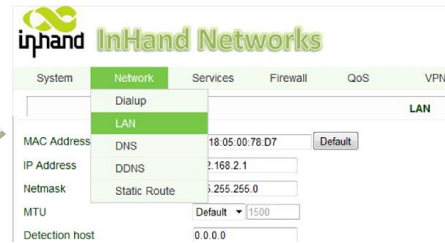


Router Login

Username

Password

Login

inhand InHand Networks

System Network Services Firewall QoS VPN

LAN

MAC Address DNS 18.05.00.78.D7 Default

IP Address DDNS 2.168.2.1

Netmask Static Route 255.255.0

MTU Default 1500

Detection host 0.0.0.0

Open IE browser, input the default IP address of the InRouter:

“<http://192.168.2.1>”. Input “username” (default: **adm**) and the “password” (default: **123456**), and then click “login”

Change the IP configuration:

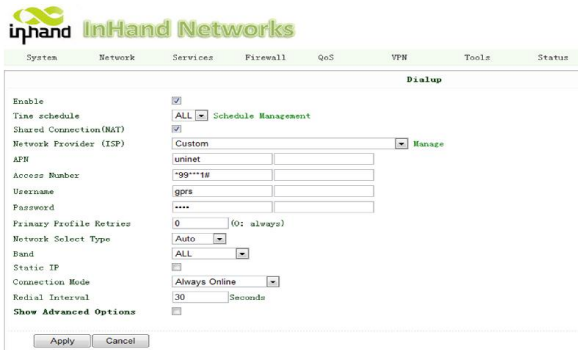
If you want to change the IP address of InRouter6x1, click “Network”→“LAN”, change the IP address you need.

Notices:

- 1 Please click “apply” to activate your configuration after finished configuration.
- 2 You need set your PC in the same subnet after resetting new IP address.

Step 4: Connect InRouter with Internet

Following the configuration steps below to enable InRouter6x1 to connect to Internet.



inhand InHand Networks

System Network Services Firewall QoS VPN Tools Status

Dialup

Enable ☒

Time schedule ALL Schedule Management

Shared Connection (NAT) 99

Network Provider (ISP) Custom Manage

APN uninet

Access Number 99***18

Username gprs

Password ****

Primary Profile Entries 0 (0: always)

Network Select Type Auto

Band ALL

Static IP ☐

Connection Mode Always Online

Redial Interval 30 Seconds

Show Advanced Options ☐

Apply Cancel



Click “Network”→“Dialup”, enter dialup configuration web. **Please check the APN, Dialup Number, Username and Password.**

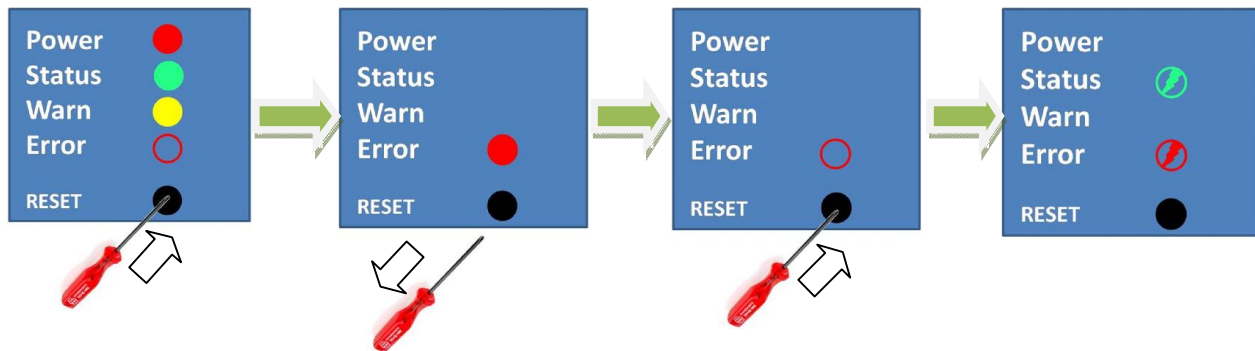
Dialup Number, Username and Password are provided by local mobile operator.

After correct configuration, InRouter6x1 can now connect with Internet. Open IE Browser, input www.google.com, you can access the Google home page.

Reset to Factory Defaults

Hardware Method

Legend: On--● Off--○ Blink--⚡



Press and hold RESET button while turning on IR6x1.

When you see ERROR LED turns on (about 10 seconds after power on), release the RESET button.

After a few seconds, the ERROR LED will turn off, now press RESET button again.

Then you will see ERROR and STATUS LED blink, which means reset to factory defaults succeed.

Web Method



Login the web interface of InRouter6x1, Select “System”→“Config Management”



Click “Restore default configuration”.

Notice: After restore default configuration, please REBOOT device.

Description of LED

Description of LED panel

Legend: On--● Off--○ Blink--⚡



Power on



Start to run firmware



Begin dial to Internet



Connect to internet



Upgrading firmware



Restore factory default

Description of Signal Status LED



Signal: 1-9 (bad signal level, route cannot work, please check the antenna and local signal level)



Signal: 10-19 (Router work normally under this signal level)



Signal: 20-31 (Perfect signal level)